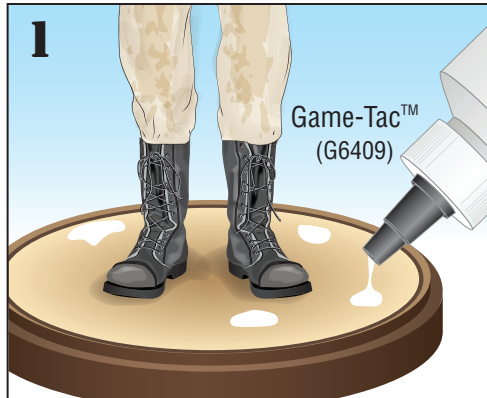


STONE WHITE G6547



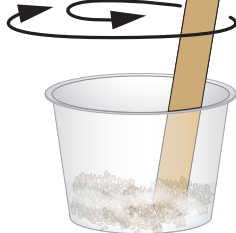
INSTRUCTIONS / INSTRUCTIONS / INSTRUCCIONES / ANWEISUNGEN



Rock Wall / Mur en pierre / Muro de piedra / Steinwand

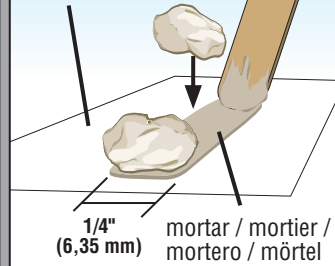


Mortar / Mortier / Mortero / Mörtel

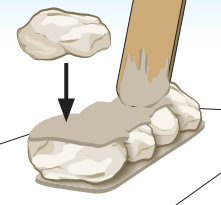


- 1/2 tbsp – Ground (G6420)
- 1/2 tbsp – Sand (G6519-G6521)
- 1 tbsp – Game-Tac (G6409)
- 1 tsp – water / l'eau / agua / wasser

1 freezer paper / papier congélateur / papel congelador / Gefrierpapier

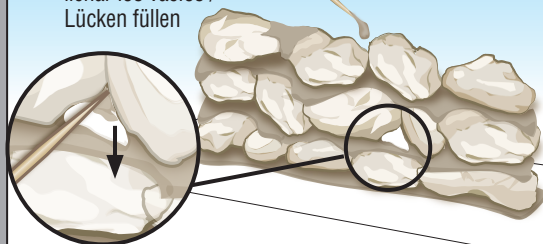


2



3 fill gaps / comblar les lacunes / llenar los vacíos / Lücken füllen

toothpick / cure-dent / palillo / Zahnstocher



Let dry overnight, then peel off paper. **NOTE:** Allow mortar to set before adding a fourth layer. / Laisser sécher une nuit, puis décoller le papier. **REMARQUE :** Laisser le mortier prendre avant d'ajouter une quatrième couche. / Dejar secar durante la noche, luego retire el papel. **NOTA:** Permita que el mortero fragüe antes de agregar una cuarta capa. / Über Nacht trocknen lassen, dann Papier abziehen. **HINWEIS:** Lassen Sie den Mörtel aushärten, bevor Sie eine vierte Schicht hinzufügen.



MODELING AND CARE INFORMATION: This product suggests the use of materials that may stain or cause damage. Take care to cover project area and clothing appropriately. Follow recommendations for use and cleanup.

Conforms to Health Requirements of ASTM D4236

Model making product. Not a toy! Not suitable for children under 14 years! / Produit pour le modélisme. Pas un jouet! Pas adapté aux enfants de moins de 14 ans! / Producto para modelismo. No es un juguete! No adecuado para niños menores de 14 años! / Modellbauartikel. Kein Spielzeug! Nicht geeignet für Kinder unter 14!